



2018

PRODUCT &

SERVICE GUIDE



- COMMERCIAL
- RESIDENTIAL
- BELOW GRADE
- ABOVE GRADE
- ROOFING & LIQUID SYSTEMS
- COMPLEX REPAIRS

2018

TABLE OF CONTENTS

💧 <u>WELCOME TO DRIPDROP</u>	04
💧 <u>COMMERCIAL WATERPROOFING</u>	05
BLINDSIDE WATERPROOFING	05
UNDER SLAB	
SINGLE FACE WALL	
POSITIVE SIDE (TWO FACEWALL) WATERPROOFING	07
FAÇADE AIR BARRIERS	
PERM-A-BARRIER VPL LIQUID	
CLEAR SILICONE RUBBERIZED COATING	
💧 <u>LIQUID SYSTEMS</u>	15
ROOFING, DECKS, TERRACES, COURTYARDS, BALCONIES & WET ROOMS	15
HEAVY TRAFFIC COATINGS	
💧 <u>SPECIALTIES & COMPLEX REPAIRS</u>	25
CEMENTITIOUS NEGATIVE SIDE WATERPROOFING	25
TANKS/VOLTS	
ELEVATOR & SEWER INJECTOR PITS	
PIPE PENETRATIONS, ELECTRICAL CONDUITS, ETC.	27
INJECTION GROUTING CRACK REPAIR	27
WATER STOPS	31
DEWATERING WELLS	33

TABLE OF CONTENTS

 <u>RESIDENTIAL</u>	35
SPRAY MEMBRANES& PROTECTION BOARDS	35
WATCHDOG WATERPROOFING® H3	
TUFF-N-DRI® H8	
COMPRESSED RIGID FIBERGLASS BOARDS	
DELTA® MS AIR GAP BOARDS	
DELTA® DRAIN BOARDS	
FOOTING DRAINS	43
Z DRAIN	
DRAIN STAR	
FOOTING BARRIER/CAPILLARY BREAK	45
FAÇADE AIR BARRIERS	49
FOUNDATION SEAL PACKAGE	51
 <u>OUTRO & CONTACT DETAIL</u>	54

NOT A DROP
OF WORRY



NOT A DRIP
OF DOUBT



Not a drop of worry

Not a drip of doubt

Keeping water out means keeping experience in. At DripDrop we believe knowledge is protection, and make it our goal to deliver high-performance waterproofing solutions with an educational approach.

As your partners in protection, we're forever discovering, improving, innovating and leading the industry with our proprietary technologies and application techniques. To continue protecting what matters most, we are proud to bring you our invaluable expertise and insights in tangible, accessible booklet form.

We invite you to dive into our 2018 catalog, and prepare to come away a drop smarter. Whatever the nature of your commercial or residential project, you can now work confidently knowing you have weighed all product options, their water-blocking benefits, and many cost-saving advantages.

It's time to pour on the protection—and wash away all doubt.

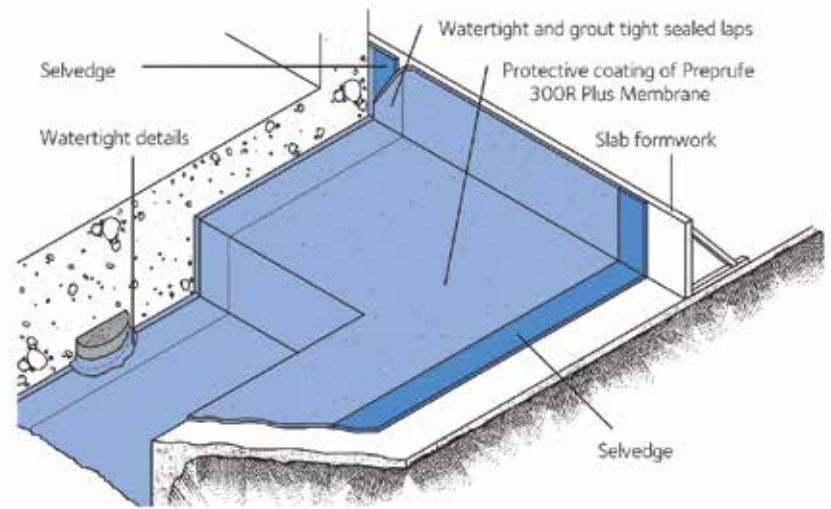
Signed and sealed,

Team DripDrop



DripDrop®

KNOW BETTER PROTECTION™



Drawings are for illustration purposes only.
Please refer to gcpat.com for specific application details.

Manhattan 2015



Preprufe® Plus

Advanced
Bond Technology™

BLINDSIDE WATERPROOFING

GCP Preprufe® 300R Plus & 160R Plus

The Preprufe® family of pre-applied waterproofing membranes is simply known as the industry best. These products form a formidable mechanical bond with the concrete, allowing the system to literally become one with the surface for both horizontal slab and vertical wall applications. **DripDrop® is one of the FEW installers in the Tristate area directly CERTIFIED by GCP, enabling us to leverage the entire GCP team for the benefit of your project.**

WHAT MAKES IT A DROP SMARTER?

- Forms unique mechanical bond
- Only product tested & proven against lateral water migration
- Ziplap double sided seams
- Industry leader for contaminated OER jobsites
- Stands up to heavy duty pedestrian traffic & rebar
- Additional Preprufe® products available for all jobsite circumstances

Brooklyn NY 2016



Brooklyn NY 2016



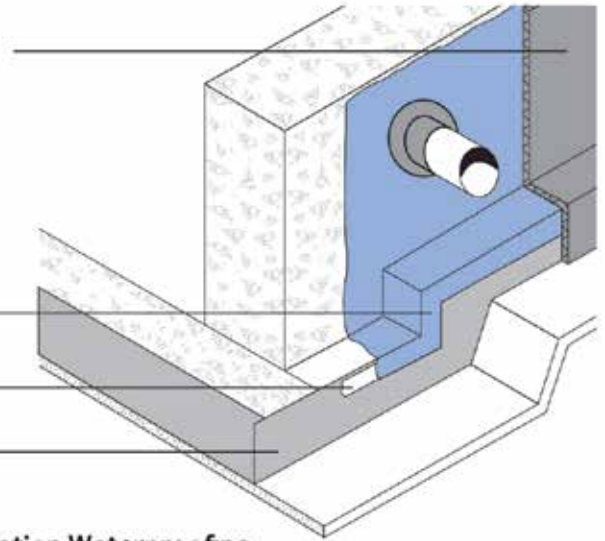
DripDrop[®]
KNOW BETTER PROTECTION™

Hydroduct Drainage
Composite

Procor 75/20

Preprufe Tape
tie-in

Preprufe



Typical Foundation Waterproofing

Drawings are for illustration purposes only.
Please refer to gcpat.com for specific application details.

Bronx NY 2018



**BE A DROP
SMARTER**

POSITIVE SIDE (TWO FACE WALL) WATERPROOFING

GCP Procor® 75

Comprised of cold vulcanized synthetic rubber, GCP Procor® 75 is a two-component fluid spray-applied waterproofing membrane for below-grade foundation walls. The product cures to create a highly durable, monolithic, fully bonded elastomeric sheet, and remains flexible with age. It offers advantages for difficult wall patterns where conventional sheet waterproofing systems are more vulnerable.

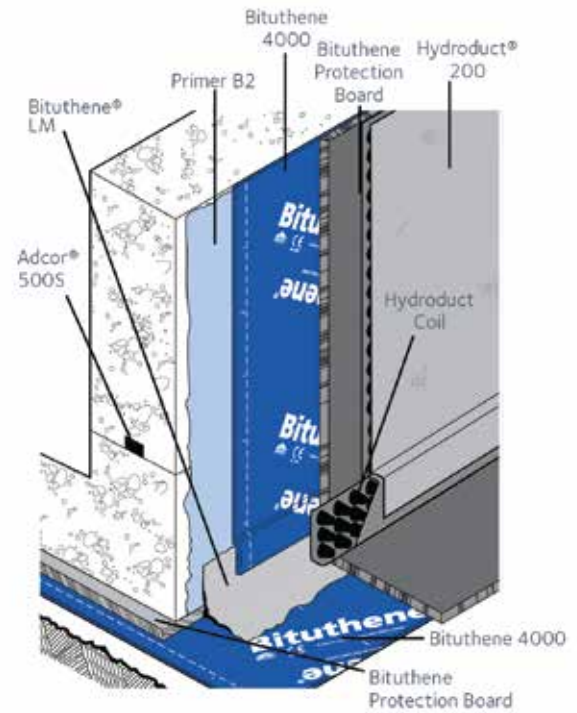
WHAT MAKES IT A DROP SMARTER?

- Hydrostatic head up to 65 feet
- Chemical-cure: 100% solids
- 100% Seamless application
- Gas-resistant performance
- Concrete adherence not contingent on a primer
- Works well in damp or marginal weather conditions and is suitable for application on 'green' concrete
- Available only from a handful of GCP-certified and Procor®-equipped installers

NYC 2017



DripDrop[®]
 KNOW BETTER PROTECTION™



Details shown are typical illustrations only and not working drawings. For assistance with working drawings and additional technical advice please contact your local GCP representative.

Brooklyn N.Y. 2017



Bituthene[®]

Queens N.Y. 2015



POSITIVE SIDE (TWO FACE WALL) **WATERPROOFING**

GCP Bituthene® 4000 & 3000

HDPE carrier film is cross-laminated and includes an exceedingly sticky rubber bitumen compound, giving it high tear strength, puncture resistance, and self-healing capabilities. This self-adhering rubberized asphalt/polyethylene waterproofing membrane is ideal for foundation walls, in both vertical and horizontal applications.

WHAT MAKES IT A DROP SMARTER?

- High hydrostatic head resistance
- Cold-applied in damp conditions
- Tolerates temps from 14°F to 95°F
- Resistant to soil/groundwater chemicals
- Extreme impact and tear resistance
- Excellent overlap security

“RISK COMES FROM
NOT KNOWING WHAT
YOU’RE DOING”

— WARREN BUFFETT

DripDrop[®]
KNOW BETTER PROTECTION™



**KEEPING EVERY
LAST DROP OUT**

Jamaica NY 2016



FACADE AIR BARRIERS

Perm-A-Barrier® VPL

This fluid spray-applied, vapor-permeable air barrier membrane cures into a fully bonded elastomeric sheet, providing outstanding energy savings as it prevents air passage to and from the space. While blocking liquid, the membrane allows the wall cavity to 'breathe,' helping prevent damage caused by trapped moisture and condensation.

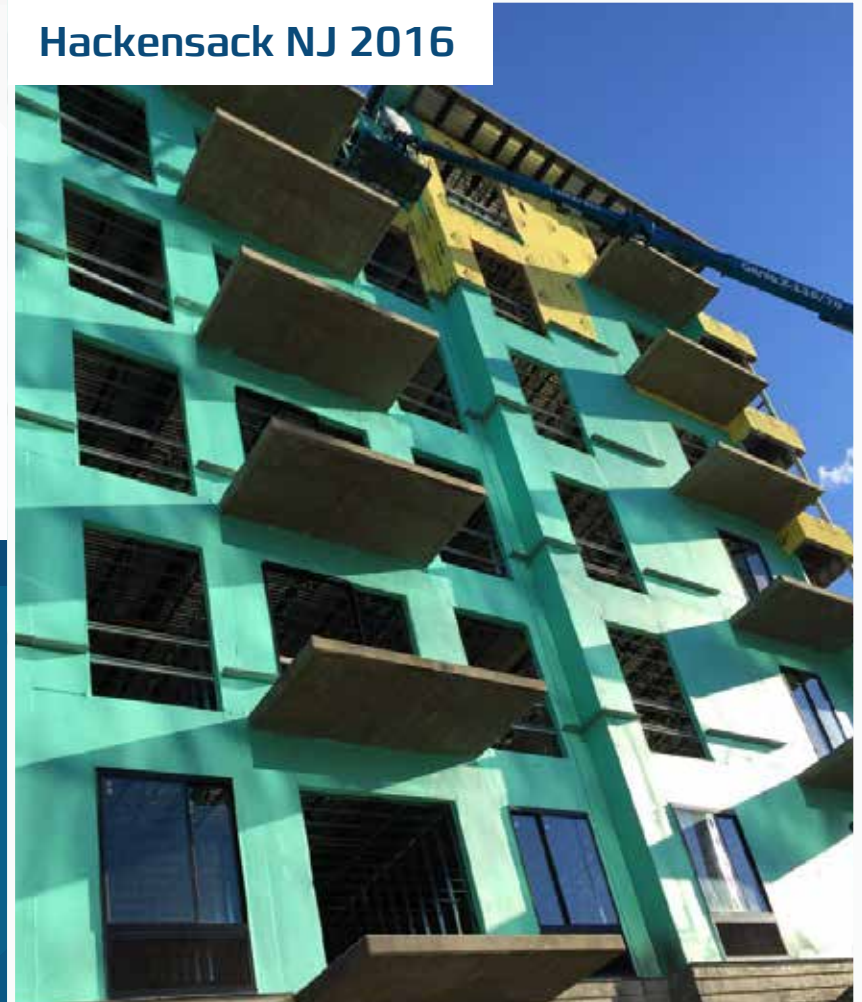
WHAT MAKES IT A DROP SMARTER?

- Complies with NFPA 285 fire resistance
- Vapor permeable for 'breathable' effect
- Environmentally-friendly formulation
- Airtight [conforms to ASTM E2357]
- Tolerates dampness for flexible application

Rockland County 2016



Hackensack NJ 2016



DripDrop[®]
KNOW BETTER PROTECTION™



NOT A DROP
OF WORRY

Rockland County NY 2012



Rockland County NY 2012



EXTERIOR BUILDING **WATERPROOFING**

Clear Silicone Rubberized Coating

This high performance 'gun grade' vulcanizing (RTV) silicone rubber is a unique penetrating water repellent that causes water and moisture to slide right off façades and concrete surfaces. It dries clear and flat, retaining the building's original finished look while delivering exceptional durability and resistance to extreme temperatures.

WHAT MAKES IT A DROP SMARTER?

- Protects even the most porous, lightweight concrete block
- Capable of bridging hairline cracks (400% elongation)
- Provides extremely long lasting, durable protection
- Available in 3 strengths for all types of porous, above-grade building materials

"THE ONLY SOURCE
OF KNOWLEDGE
IS EXPERIENCE"

— ALBERT EINSTEIN

DripDrop[®]
KNOW BETTER PROTECTION™

Brooklyn 2017



Brooklyn 2017



Silc**r**[®]

ROOFING. DECKS. TERRACES. COURTYARDS. **BALCONIES & WET ROOMS**

GCP Silcor® 900MP

The undisputed champion in waterproofing innovation, DripDrop® maximizes the capabilities of every product for a range of high-performance applications. A stellar example is our in-depth understanding and deployment of GCP Silcor® 900MP for both preventative and corrective uses. This polyurea system is so versatile, we apply it to irma roofs, green roofs, decks, terraces, wet rooms, retrofitting projects and so much more.

A highly versatile spray-applied waterproofing system, Silcor® 900MP applies easily, sets rapidly, and ensures excellent fire safety across a multitude of surfaces. As a polyurea membrane and primer system, it serves as an efficient moisture barrier on both zero pitched and pitched surfaces, performing well under pressure from harsh weather and foot traffic.

WHAT MAKES IT A DROP SMARTER?

- 100%-solids polyurea elastomer spray coating
- Fully bonded for solid waterproofing protection
- Perfect for new and existing flat and sloping roofs
- 400% elongation eliminates reinforcement fabric
- Resists wind suction and thermal cycling
- Ultimate protector for high-humidity areas
- Remarkably fast gel time allows for instant tile install
- Temperature tolerance of -40°F to 350°F
- Odorless; no VOCs
- Installs directly on concrete, dens deck, tappers EPS insulation, and plywood
- Easy to seal uneven surfaces and penetrations
- Smooth flush termination
- Applicable before or after mud job

Brooklyn 2017



“KNOWLEDGE IS OF NO VALUE
UNLESS YOU PUT IT
INTO PRACTICE”

— ANTON CHEKHOV

DripDrop[®]

KNOW BETTER PROTECTION[™]



REROOF

Manhattan NY 2017



Brooklyn NY 2018



New Jersey City



Brooklyn 2017



COMMERCIAL

LIQUID SYSTEMS

SPECIALTIES & COMPLEX REPAIRS

RESIDENTIAL

DripDrop[®]

KNOW BETTER PROTECTION[™]



DECKS. TERRACES. COURTYARDS

Fort Lee Ny 2017



Pomona NY 2018



Brooklyn 2017



Brooklyn 2017



COMMERCIAL

LIQUID SYSTEMS

SPECIALTIES & COMPLEX REPAIRS

RESIDENTIAL

DripDrop[®]

KNOW BETTER PROTECTION[™]



SHOWERS/ WET ROOMS

Brooklyn 2017



Brooklyn 2017



Brooklyn NY 2017



Haverstraw NY 2018



DripDrop[®]
KNOW BETTER PROTECTION™

NYC 2017



Brooklyn NY



THERE'S NO
BETTER THAN
KNOWING BETTER

HEAVY TRAFFIC COATINGS

Tremco® Vulkem® PUMA System

The Vulkem® PUMA system is a cold-applied traffic deck coating system designed for waterproofing concrete slabs and protecting occupied areas underneath from water damage. The system also protects concrete from the damaging effects of deicing salts, chemicals, gasoline, oils and antifreeze. Its elastomeric properties enable more 'give' to effectively bridge shrinkage cracks in the concrete slab.

WHAT MAKES IT A DROP SMARTER?

- 400% elongation delivers elasticity to allow for concrete shift
- Powerful performance against heavy duty vehicular traffic
- Fast cure-through time allows for use 72 hours after installation
- Delivers tenacious adhesion, extreme impact and abrasion resistance, and remarkable chemical stability
- Superior elongation over traditional MMA/PMMA technology systems
- Mildew and fungus resistance guards against environmental contaminants
- Recoatable and compatible with other Tremco® sealants, enhancing waterproofing protection with full system compatibility

Brooklyn NY 2018



Brooklyn NY 2016



Electric volt in Water table , Brooklyn NY



Electric volt in Water table sealed , Brooklyn NY



Elevator Pit in water table Sealed, NYC.



Old Rubble Foundation Elevator Pit Sealed, NYC.



CEMENTITIOUS NEGATIVE **SIDE WATERPROOFING**

Aquafin-IC®

To turn concrete into a seamless, waterproof shield, we employ technologies like the state-of-the-art Aquafin-IC®. This penetrating cementitious coating effectively waterproofs both new and old structures, as crystalline technology chemically reacts with moisture and free lime to block water absorption. Applied to either structurally sound concrete or concrete masonry, this product resists HEAVY hydrostatic pressure and provides permanent protection for the life of the concrete structure.

WHAT MAKES IT A DROP SMARTER?

- Permanently active crystalline technology
- For use in exterior [+] or interior [-] waterproofing
- Great for elevator pits, water plants, slurry walls, etc.
- Deep-penetrating effect on concrete cracks
- Applies to moist or damp substrate

Ejector Pit In Water table sealed, Brooklyn NY



DripDrop[®]
KNOW BETTER PROTECTION™

Penetration NYC



Penetration NYC



LET'S WORK
SMARTER

PIPE PENETRATIONS. ELECTRICAL CONDUITS. INJECTION GROUTING CRACK REPAIR. CURTAIN WALL INJECTION

DeNeef® Injection Grouting

When it comes to ensuring a reliable seal around hard-to-reach pipe or electrical clusters, DripDrop® borrows a strategic variety of technologies and application methods from high-pressure crack injection and cementitious waterproofing. **As a certified and trained DeNeef® injection installer, DripDrop® is experienced with the full line of DeNeef® hydrophobic polyurethanes.** Such products instantly react upon water contact, expanding and curing to impermeable yet flexible foam. The formula remains super resistant to organic solvents, mild acids, alkali, microorganisms and other environmental threats.

WHAT MAKES IT A DROP SMARTER?

- Up to 20X foam expansion
- Super tough but flexible performance
- Contains no volatile solvents
- Simple single component system
- Does not dilute in water

Live High Voltage Electrical Conduit Sealed, NYC



Bronx, N.Y.



DripDrop[®]
KNOW BETTER PROTECTION™



NEVER TOO EARLY
TO THINK AHEAD

PIPE PENETRATIONS. ELECTRICAL CONDUITS. INJECTION GROUTING CRACK REPAIR. CURTAIN WALL INJECTION

Cetco® BENTOGROUT®

For sealing leaks in concrete, masonry block, brick, and stone foundations, DripDrop® often recommends BENTOGROUT®, a high-solids grout featuring a proprietary blend of bentonite and polymer. Formulated for sealing water leaks in existing below-grade structures, it is pumped in a fluid state adjacent to the exterior of the structure where it sets into a gelatinous state and forms an exceptional waterproofing barrier.

WHAT MAKES IT A DROP SMARTER?

- Applies to building's exterior and stops water before penetration
- Fills voids in adjacent soil and bridges over small cracks in concrete
- Self-sealing capability if structure settles; performance not limited by future hairline cracking in concrete
- Does not shrink or dry out in sub-surface soil formations, and is not affected by freeze/thaw cycling
- Remains flexible and maintains putty-like consistency over time
- Consists of natural eco-friendly minerals and lasts for life of structure



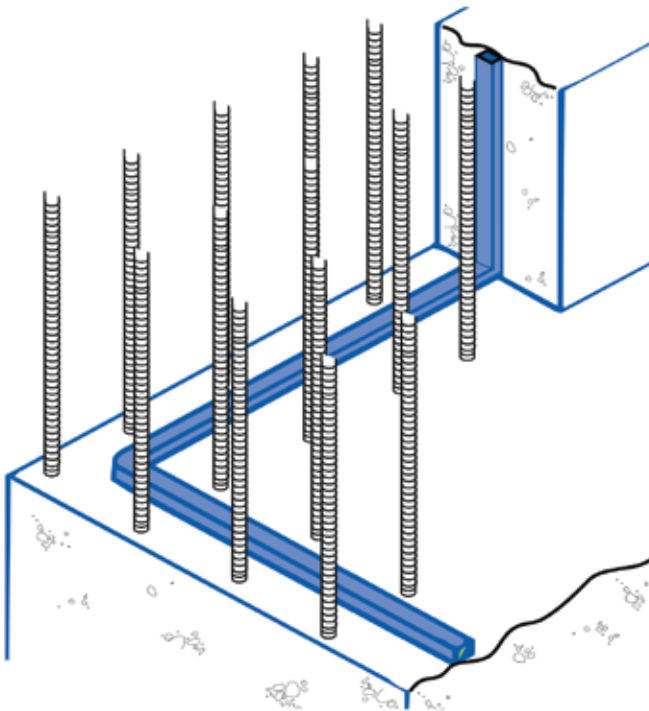
WATER STOPS

GCP ADCOR® Hydrophilic Systems

DripDrop® offers both preventative and corrective water stop installations. Using cutting-edge injectable systems like GCP's ADCOR® hydrophilic water stop, we don't just reduce the likelihood of water infiltration—we create an all-around better connection between the two surfaces of a cold joint. Since ADCOR® swells on contact with water, it offers advanced installation possibilities through the applied principle of 'the path of least resistance'.

WHAT MAKES IT A DROP SMARTER?

- Expands only when needed, eliminating replacement need due to premature expansion
- Doesn't weaken during or after expansion
- Offers simple jointing for preventative and corrective uses
- Doesn't require steel mesh
- Retains strength after multiple wet-dry expansions



Details shown are typical illustrations only and not working drawings. For assistance with working drawings and additional technical advice please contact GCP Technical Services.

Upstate N.Y. 2018



WATER STOPS

DeNeef® Injecto® Tube

Used as a preventative water stop, DeNeef® Injecto® Tube is a groutable hose water stop system that readies the space for chemical grout application. The product acts as a dependable conduit, installing before concrete is poured so you can inject grout after shrinkage occurs. This helps maximize the grout's performance, allowing you to seal all voids within joints, pipe penetrations, slurry walls, slab connections and more.

WHAT MAKES IT A DROP SMARTER?

- Creates an emergency exit so you can bring DripDrop® back at any time for injection to stop any future leaks
- Injectable any time after concrete cures
- For specific use with chemical grouts
- Forms a permanent seal with warranty

Rye N.Y. 2018



DripDrop[®]

KNOW BETTER PROTECTION™



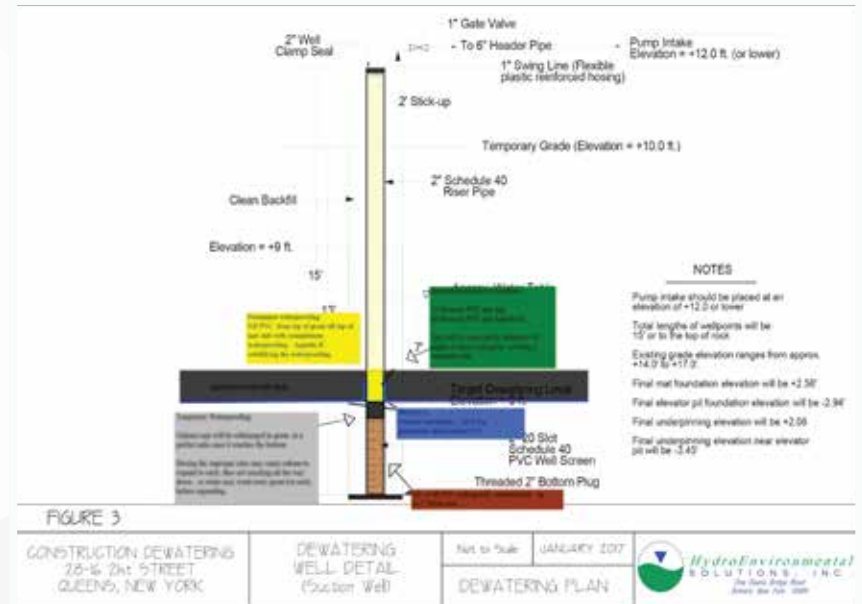
OUR PRODUCT AND
PEOPLE ARE LONG TERM

DEWATERING WELLS

DripDrop® is proud to leverage our wherewithal, confidence, methods and means to deliver waterproofing with high-complexity active dewatering wells in projects that exist under the water table.

Unlike any other waterproofing installer, DripDrop® has a proven record of executing dewatering well projects that fully and permanently stop water from ever coming up through the slab. The methods we

employ include DeNeef® injection grouting, Aquafin-IC®, Bentogrout®, and water stops. Such innovative waterproofing applications are case-specific, and we use any combination of these technologies to ensure not a drop of water ever comes through the dewatering wells. For projects no one else will touch, choose the know-it-all installer who assumes full ownership and responsibility.



WHAT MAKES IT A DROP SMARTER?

- Each project is based on years of DripDrop® expertise
- Our approach is proven by numerous custom applications
- The smart decision is leaving the stress and responsibility to us
- Rely on the only people who can really pull this off: The best installers using the best manufacturers and the very best ideas in dewatering wells

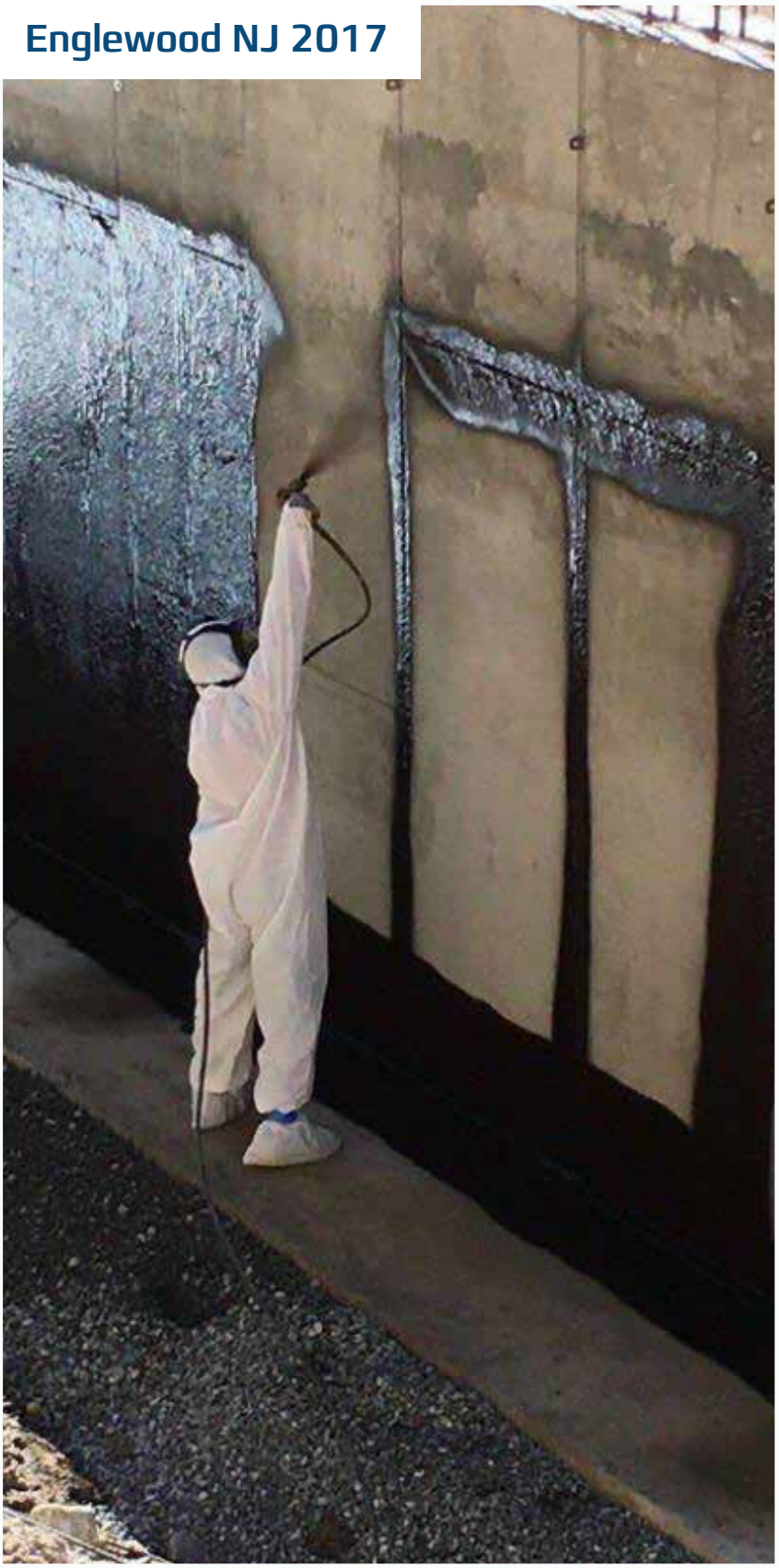
DRIPDROP IS INSPIRED TO PLAN AHEAD.
INSTALL KNOWLEDGE, AND LAYER ON
THE INNOVATION.

DripDrop®

KNOW BETTER PROTECTION™



Englewood NJ 2017



SPRAY MEMBRANES & PROTECTION BOARDS

Tuff-N-Dri® H8

For a waterproofing membrane with 8-foot hydrostatic head resistance, Tuff-N-Dri® H8 provides reliable protection against foundation wall leaks and seepage. This spray-applied waterproofing membrane enables consistently cured thickness, making it ideal for a variety of commercial applications. Its exceptional hydrostatic performance stops moisture penetration even amidst heavy rains, sump pump failure, excessive thaw and other aggressive water events. For simpler applications, we also offer a sister product by Watchdog Waterproofing®.

WHAT MAKES IT A DROP SMARTER?

- 8-foot hydrostatic head resistance
- Elongates to span and bridge cracks
- Superior hang strength even when spanning foundation cracks
- Installable on 'green' concrete as soon as forms are stripped
- Easy airless spray application
- Excellent adhesion to concrete
- Resists soil/mold degradation

Westchester 2015



DripDrop[®]
KNOW BETTER PROTECTION™

Middleton, NJ 2016



IGNORANCE
IS RISK

SPRAY MEMBRANES & PROTECTION BOARDS

Warm-N-Dri® Drainage Protection Insulation (DPI) Board

A compressed rigid fiberglass board, Warm-N-Dri® Drainage Protection Insulation (DPI) Board is available in 4' x 4' sheets with options of 3 R-value ratings to meet contractor's preferences on each individual project. As a protection board that also introduces R-value, it makes the ideal solution to bring the best of all 3 DPI factors to the table. Employed in defense against backfill damage, these versatile fiberglass sheets help bolster spray-applied waterproofing systems to provide dependable drainage and proper thermal insulation.

WHAT MAKES IT A DROP SMARTER?

- Drainage of up to 237 gallons/hours/lineal foot
- Thermal resistance of up to R=10.1 to eliminate condensation
- Bundled fibers add resiliency even in impact-prone environments

Monsey, N.Y. 2017



Monroe, N.Y. 2015



DripDrop[®]
KNOW BETTER PROTECTION™



UNCOMMON
KNOWLEDGE

Brooklyn, N.Y. 2014



Teaneck N.J. 2017



SPRAY MEMBRANES & PROTECTION BOARDS

Delta®-MS Air Gap Boards

A highly compressive-strength protection board against backfill, Delta®-MS features a vacuum-formed pattern to create an air gap between the membrane and the foundation so water is allowed to drain down to the footing. It also helps with crack bridging so no water intrusions can occur in the future. This dampproofing helps ensure more comfortable and healthier living spaces, better efficiency and durability, and fewer warranty claims and callbacks.

WHAT MAKES IT A DROP SMARTER?

- Dimpled air-gap pattern allows incidental water to freely drain by gravity
- Reliably bridges foundation cracks and deflects soil moisture
- Compressive strength of approx. 5,200 psf
- 12 gal/min/ft drainage flow rate
- Made from 60% recycled and 40% virgin materials: Recycled high-density polyethylene encapsulated between two layers of virgin HDPE

KNOWLEDGE
INSTALLED

DripDrop[®]

KNOW BETTER PROTECTION[™]

Monsey ny 2017



Englewood Cliffs NJ 2018



SPRAY MEMBRANES & PROTECTION BOARDS

Delta®-Drain

Boasting excellent drainage capacity and hydrostatic pressure resistance, the Delta®-Drain system provides highly effective waterproofing protection for both horizontal and vertical applications. Its unique geotextile composition resists rot and stops clogging of passageways along foundation walls, while impressive compressive strength, high-impact performance, and effortless installation offer a strong array of cost-saving benefits.

WHAT MAKES IT A DROP SMARTER?

- High drainage capacity: 12 gal min/ft vertical; 3.5 gal/ min/ft horizontal
- 100% recycled core/virgin HDPE
- Working temperature range of -22°F to 176°F
- Compressive strength of approx. 5,200 psf
- Exclusive dimple pattern for corners

Monroe, N.Y. 2018



DripDrop[®]
KNOW BETTER PROTECTION™



Monticello, N.Y. 2017



Westchester, N.Y. 2018



WATER OUT.
EXPERIENCE IN

FOOTING DRAINS

DRAINSTAR® Z-Drain

This high-performance prefabricated footing drain for below-grade foundation walls saves you time, money, labor and the bother of messy drain tile and gravel. The super-efficient stripdrain captures water from the soil to keep foundations leak-free over the long run. Bring the same DripDrop® trust and expertise from your walls down to your footing drains. Also available in a 12" stripdrain version.

WHAT MAKES IT A DROP SMARTER?

- Totally eliminates the need for tile, gravel and filter fabrics
- Flow rate of 150 gal/min/ft²
- 65-lb. puncture strength
- Compressive strength of 4000 lb/ft
- Have one manufacturer and one installer responsible for both waterproofing and footing drain
- Saves time and money by scheduling one simultaneous inspection for waterproofing and footing drain
- 30-year performance warranty

Newburg NY 2015



DripDrop[®]
KNOW BETTER PROTECTION™



PROTECTION
THAT'S IN
THE KNOW

Bronx, N.Y. 2018



FOOTING BARRIER/ CAPILLARY BREAK

Delta®-Footing Barrier

To best protect basements against unwanted moisture and mildew, the Delta®-Footing Barrier creates a capillary break membrane designed to prevent damage caused by moisture wicking from footing that's under constant water submersion. It puts a stop to mold and rot, and improves the overall integrity of the living space. The barrier is comprised of a 3-ply membrane, polyester needle-punched fabric, polyethylene membrane and an anti-slip surface layer, so concrete can be poured directly against it.

WHAT MAKES IT A DROP SMARTER?

- Installs on freshly poured wet concrete to become one with footing
- Prevents capillary wicking
- Perfect for damp, mold-prone basements
- Life expectancy of 25+ years

DELTA®-FOOTING BARRIER

www.deltafb.com

- Prevents Capillary Wicking
- Helps to Prevent Mold
- Ideal for Fully Insulated Basements

DripDrop[®]
KNOW BETTER PROTECTION™



White Plains, NY 2018



WE KNOW BETTER
AND THERE'S
NO BETTER

UNDERSLAB **VAPOR BARRIER**

Delta®-MS Underslab

Are you concerned with setting down slabs in a wet area? Protect your building against underlying water from the get go. For excellent capillary break and vapor resistance, Delta®-MS Underslab proves a versatile option for many residential and commercial projects. Designed for use with below-grade concrete slabs, this impermeable membrane effectively repels water and vapor, promises a healthy, comfortable environment free of any moisture trying to egress from the underslab.

WHAT MAKES IT A DROP SMARTER?

- Protects sensitive floor finishes (such as wood) from rising dampness
- Bridges any structural cracks in slab, protecting water from ever coming through
- Offers exceptional detailing around pipe penetrations and detail termination from wall to footing, securing your foundation's weaker links from water

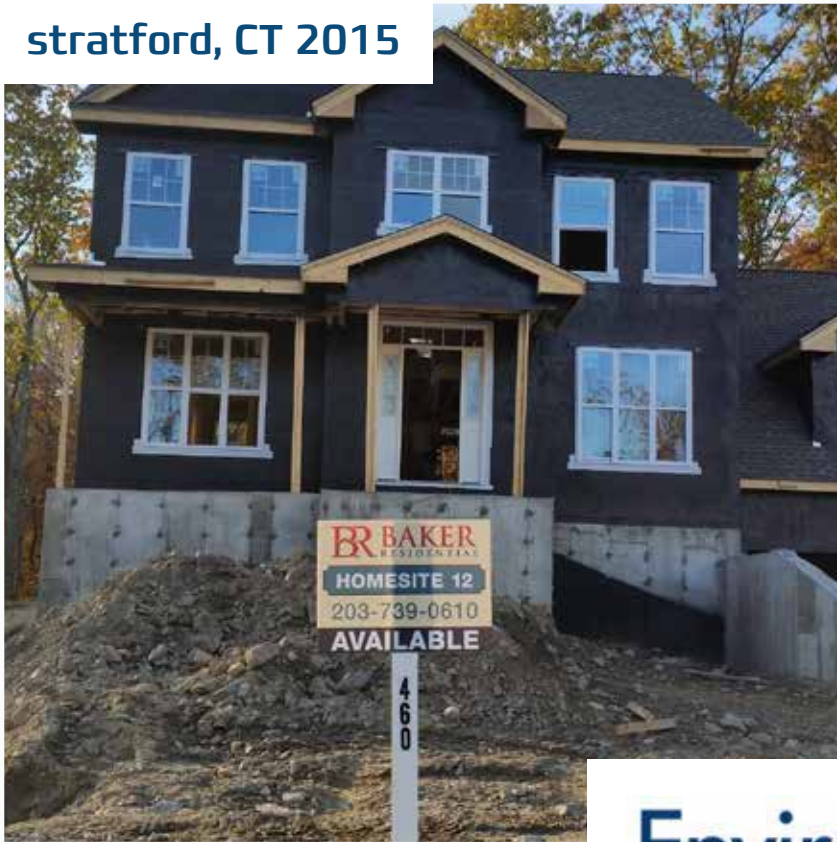
White Plains, NY 2018



White Plains, NY 2018



stratford, CT 2015



Middletown, N.Y. 2017



EnviroDri.
WEATHER-RESISTANT BARRIER



Brooklyn, N.Y. 2016



Pomona, N.Y. 2013



FACADE AIR BARRIER

EnviroDri® Weather-Resistant Barrier System

Protect walls from moisture, mold and mildew and allow necessary vapor passage with the EnviroDri® Weather-Resistant Barrier System. This highly effective liquid-applied membrane safeguards your entire sheathing system against moisture, providing dependable, uninterrupted coverage for joints and more. Unlike housewraps, this permeable product resists blow-offs in high winds and adheres directly for effortless installation.

WHAT MAKES IT A DROP SMARTER?

- Fully bonded application to substrate
- Blocks moisture/air while allowing vapor to pass through
- Wonderful uniformity with spray technique
- Effectively eliminates the need for:
 - Thousands of nails and staples through wall sheathing
 - Housewraps
 - Interior air seal packages
- Meets New York State energy codes

Wappingers fall NY 2018



West NY, NJ 2017



DripDrop[®]
KNOW BETTER PROTECTION™

Paramus NJ 2017



STAY
DRIP-FREE
FOR DECADES

FOUNDATION SEAL PACKAGE

DripDrop® Seal Package

A DripDrop® original, our total foundation seal package offers you the peace of mind of a second site visit to seal utility penetrations in the foundation walls from the inside, as well as to treat all wood-to-concrete areas such as windows, doors and sill plates from the outside. Rest assured that we close out any and all open, untreated problem spots that easily go unnoticed by contractors in typical construction situations.

WHAT MAKES IT A DROP SMARTER?

- Reinforces and supports all major waterproofing measures
- Installation is performed after final construction
- Enables you to install any utilities/building connections without limitations
- Package installed by the same DripDrop® experts

Woodberry NY 2017 move to previous spread



KNOW
BETTER
PROTECTION





Got questions? Need advice?

Don't worry. The pressure's off.

Thanks for browsing our catalog of handpicked premium waterproofing and roofing products we use to help our clients protect what matters.

For more information or to inquire about our installation services, reach out to **The Dropout Team**. Our friendly, highly knowledgeable pros are always available to provide educational support and troubleshooting strategy for all your residential and commercial barrier dilemmas.

Here at **DripDrop Waterproofing®** we pour our hearts into every project, installing knowledge, experience and attention to detail like no one else on the market. Choose us as your waterproofing partner, and prepare to **Know better protection™** for the life of your buildings.

- I** 1866.dripdrop
- F** 845.928.9670
- E** sales@dripdropwaterproofing.com
- W** www.dripdropwaterproofing.com



WHAT MAKES DRIPDROP® **THE SMARTEST CHOICE?**

We have your back. They have ours.

Choosing DripDrop® means choosing all the best names in waterproofing. As the most highly **certified** installer by the industry's leading manufacturers, DripDrop® brings the knowledge and technology of the following giants to your every project.

Always in a state of service

Thanks to our two fully staffed outposts in NYC and Upstate New York, you enjoy the confidence and convenience of timely service, reliable support, and the coverage of our fleet of 20+ vehicles on the road all throughout the Tristate area.



DripDrop®

KNOW BETTER PROTECTION™

T 1866.dripdrop
F 845.928.9670
E sales@dripdropwaterproofing.com
W www.dripdropwaterproofing.com

